

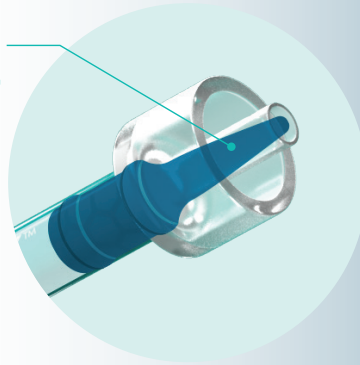
Clinicians shouldn't have to choose between giving their patients the best care or saving their practice money. Our mission is to deliver both."

– Carolyn Primus, PhD

Inventor of White ProRoot®\*, MTA<sup>2</sup>, Grey MTA Plus®, NeoMTA Plus®, NeoMTA® 2, NeoSEALER™ Flo, NeoPUTTY™

\* PROROOT®, DENTSPLY®, and DENTSPLY SIRONA® are registered trademarks of DENTSPLY SIRONA Inc.  
2 Patented under US Patent No. 7,892,342 owned by DENTSPLY International Inc.

## ZERO WASTE SYRINGE WITH POSITIVE DISPLACEMENT PLUNGER TIP



## COMPLETE YOUR ARMAMENTARIUM

with NeoSEALER Flo, the efficient, effective and most economical premixed bioactive bioceramic sealer in its class.

NeoSEALER Flo and NeoPUTTY are available individually to help you get started on the path to bioactive outcomes for 13 of your most important endodontic procedures.



For more information visit:  
[AVALONBIOMED.COM](http://AVALONBIOMED.COM)

MKT20014-a4



# NeoPUTTY™



## NEXT GENERATION PREMIXED ROOT & PULP TREATMENT MATERIAL

- Higher radiopacity
- Immediate wash-out resistance
- Ideal consistency
- Non-staining

# A HIGHER STANDARD IN BIOACTIVE BIO CERAMIC PUTTY.

NeoPUTTY is premixed and optimized for more efficient handling and placement. Its firm, non-tacky consistency, wash-out resistance and bioactivity make it the premier putty for 11 of your most important procedures.

## NEOPUTTY PROVIDES EXCELLENT PERFORMANCE FOR DENTAL PROCEDURES CONTACTING VITAL PULP AND PERIRADICULAR TISSUE:

- ✓ Direct and indirect pulp capping
- ✓ Partial pulpotomy
- ✓ Cavity liner and base
- ✓ Pulpotomy and apexogenesis
- ✓ Perforation repair
- ✓ Root resorption
- ✓ Obturation
- ✓ Root apexification
- ✓ Root-end filling

## NO DRY OUT

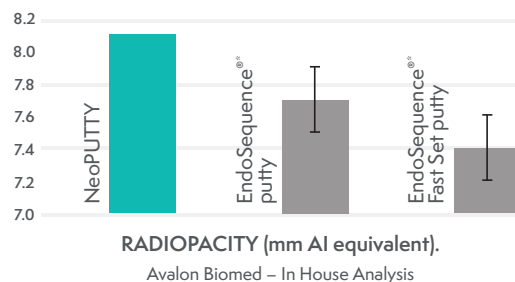
Does not dry out between uses, maintaining ideal consistency throughout its use.

NeoPUTTY's ease of use offers predictable, consistent quality results in a dry or wet environment, whether filling a perforation, performing vital pulp therapy or during apical surgery."

– Sayeed Attar, DDS, MS  
Endodontist

## HIGHEST RADIO PACITY IN ITS CLASS

8.1 mm Al equivalent radiopacity.



## DIMENSIONALLY STABLE

With **no shrinkage** to ensure a gap-free seal, minimizing opportunity for bacterial infiltration.

**NeoPUTTY**      **0.08% expansion**  
ADA 57 std. ≤1% shrinkage & ≤0.1% expansion

## IMMEDIATELY WASH-OUT RESISTANT

Stays where you want it so you can efficiently complete the procedure, ensuring bioactive benefit.

## NON-STAINING

- ✓ Won't discolor teeth – **EVER**.
- ✓ NaOCl won't cause discoloration.

## EXTENDED WORKING TIME



\*Sets in vivo in the presence of moisture

## RESIN-FREE

For maximum bioactivity.

## MTA-BASED BIOACTIVITY

Hydroxyapatite forms to ensure bioactive sealing.

## HIGH pH

To promote osteogenic response.

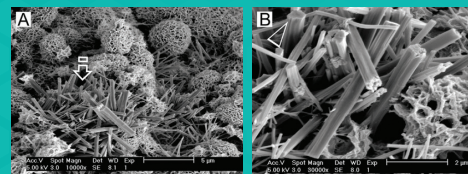
## FIRM, NON-TACKY CONSISTENCY

Uniform, firm, low-tack putty makes placement and condensation easier.

## UNLIKE INERT RESIN AND ZOE MATERIALS, MTA PROVIDES STATE OF THE ART BIOACTIVE TECHNOLOGY

to promote bioactivity and support healing.

- After placement of MTA in the tooth, body fluids infiltrate the paste to cause setting.
- During this process calcium and hydroxide ions are released from the MTA, promoting hydroxyapatite (HA) formation on the MTA surfaces.
- When HA coats the surface, it hides the underlying MTA to minimize foreign body reactions and support healing responses of the pulpal or periapical tissue.



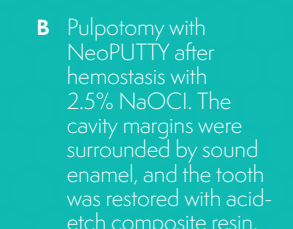
Calcium phosphate precipitated crystals scattered on the hydrated tricalcium silicate cement surface!

High magnification image of the calcium phosphate crystals!

## OUR BIOACTIVE TECHNOLOGY IN ACTION



**A** Preoperative view of carious No 17 with signs and symptoms of irreversible pulpitis.



**B** Pulpotomy with NeoPUTTY after hemostasis with 2.5% NaOCl. The cavity margins were surrounded by sound enamel, and the tooth was restored with acid-etch composite resin.



**C** 7-month post-operative view showing resolution of periapical radiolucency and increase in root dimensions. Note advanced apical closure.

Courtesy of Zafer C. Cehreli, DDS, PhD Hacettepe University

EndoSequence® BC RRM-Putty™ and BC RRM-Fast Set Putty™ are trademarks of Peter Brasseler Holdings LLC.

1 J Dent. 2014 May;42(5):517-33. A review of the bioactivity of hydraulic calcium silicate cements. Niu LN, Jiao K, Wang TD, Zhang W, Camilleri J, Bergeron BE, Feng HL, Mao J, Chen JH, Pashley DH, Tay FR